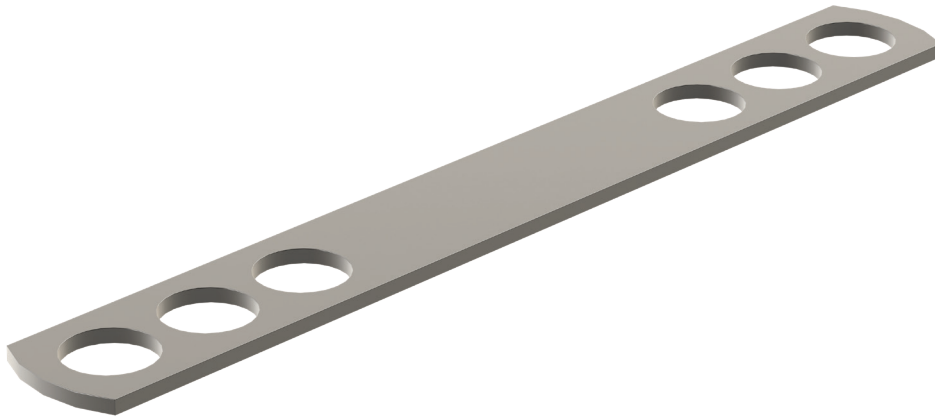


2300 Range Wall Tie



Product highlights

- Collar joint tie
- 2.5kN shear capacity
- 150mm long
- UKCA / CE+UKNI marked
- Grade 304 / 316 stainless steel
- Lucideon tested
- A1 non-combustible



UKCA / CE+UKNI marked

Technical data

The ACS 2300 Range Tie is used in collar joint or double leaf applications where the cavity does not exceed 25mm. The tie can also be used in cavity wall applications where there is no risk of water bridging the cavity.

The ACS 2300 Range Tie is available in grades 304 (BS EN 1.4301) and 316 (BS EN 1.4401) austenitic stainless steel.

According to BS EN 845-1 ties should be installed at a minimum density of 2.5 ties/m² at 900mm horizontal and 450mm vertical centres, staggered by 450mm between courses, however project specific centres should be calculated by the facade or project structural engineer.

ACS recommends that the ties are installed with a nominal embedment of 62.5mm.

A1 non-combustible

The ACS 2300 Range Tie is a stainless steel product which satisfies the requirements for an A1 classification without testing as the below details outline. Referring to document 96/603/EC, the ACS 2300 Range Tie is produced from stainless steel and shall on account of the material's low level of combustibility, be classified in Classes A ("No contribution to fire") without need for further testing. The document shows all categories considered as non-combustible. For any further information please refer to the aforementioned standard.

Thermal properties

For use in any thermal models, the following information can be used. The 2300 Range Tie has a cross sectional area of 38mm². Stainless steel has a thermal conductivity of 17W/mK. With these figures, the effect of wall ties upon the panel can be calculated.

Test results

The design resistance of shear ties conforming to BS EN 845-1 should be taken as the declared shear load capacity, relevant for the type of mortar and masonry units, divided by the partial factor for use with ancillary components. This factor is specified within Table NA.1 of the NA to BS EN 1996-1-1:2005, and is given as 3.0 for sites in the UK.

Test results show that the ACS 2300 Range Tie has a declared shear load capacity of 2500N.